


# ROSE COLLECTION

Roses are classics that never go out of style.

## PRODUCT OVERVIEW

### HIGHLIGHT

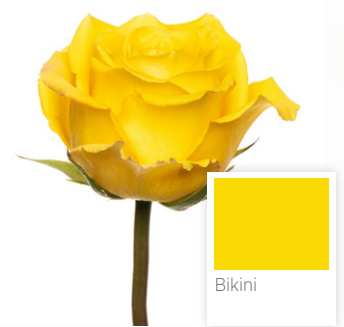
|                        |                                                                                   |
|------------------------|-----------------------------------------------------------------------------------|
| Colors                 |  |
| Vase Life              | 10 - 15 Days                                                                      |
| Bloom Size             | Medium to Large                                                                   |
| Bunch Size             | 25 Stems / Bunch                                                                  |
| Grades Available       | 50cm, 60cm, 70cm, 80cm                                                            |
| Box Packing Specs*     | Q x 100 Stems, F x 200 Stems                                                      |
| Consumer Bunch Sizes** | 2 Stems, 3 Stems, 4 Stems                                                         |

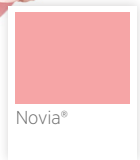
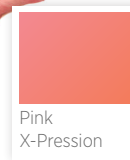
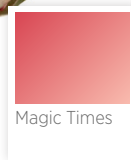
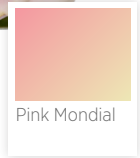
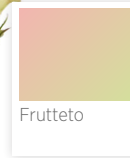
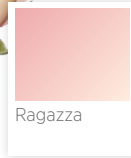
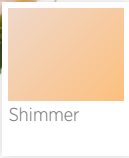
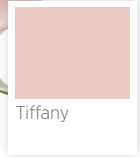
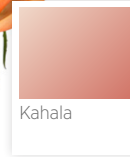
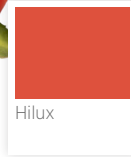
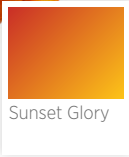
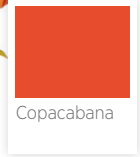
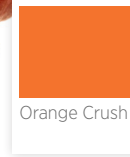
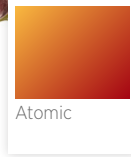
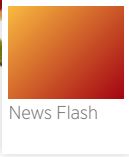
\*Box size can change depending on the variety.

\*\*Please contact your Account Executive for pricing and availability.



## VARIETY AVAILABILITY





**NORTH AMERICA**

info@esmeraldafarms.com  
Phone: +1(800) 888-8994

**GLOBAL MARKETS**

hello@esmeraldafarms.com  
Phone: +593 99 712 6890

**FOLLOW**



[www.esmeraldafarms.com](http://www.esmeraldafarms.com)



Opala



Sweet Unique



Sweet Memory



Deep Purple



Stiletto®



Pink Floyd



V.I. Pink \$™



Full Monty



Lola



Rediant®



Freedom



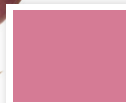
Lady in Red



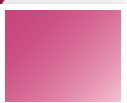
Cupido



Explorer



Cool Water



Moody Blues

**NORTH AMERICA**

info@esmeraldafarms.com  
Phone: +1(800) 888-8994

**GLOBAL MARKETS**

hello@esmeraldafarms.com  
Phone: +593 99 712 6890

**FOLLOW**



[www.esmeraldafarms.com](http://www.esmeraldafarms.com)